



# Topaz 12

## Exploded Parts Diagram

### Topaz 12C Topaz 12CX



Kingsnorth Technology Park  
Wotton Road  
Ashford  
Kent  
TN23 6LN  
Telephone: +44 (0)1233 629186  
Fax: +44 (0)1233 645897

[www.toppersailboats.com](http://www.toppersailboats.com)





## Summary

Trolleys, Trailers & Accessories	3
Hulls	4
Trampoline	5
Front Beam	6
Rear Beam	7
Rudder	7, 8 & 9

### **Rig**

Mast	10 & 11
Lines	12 & 13
Ropes, Blocks & Rivets	14



This manual contains part numbers and names for the Topaz 12C

It is recommended to replace broken or worn parts as soon as possible

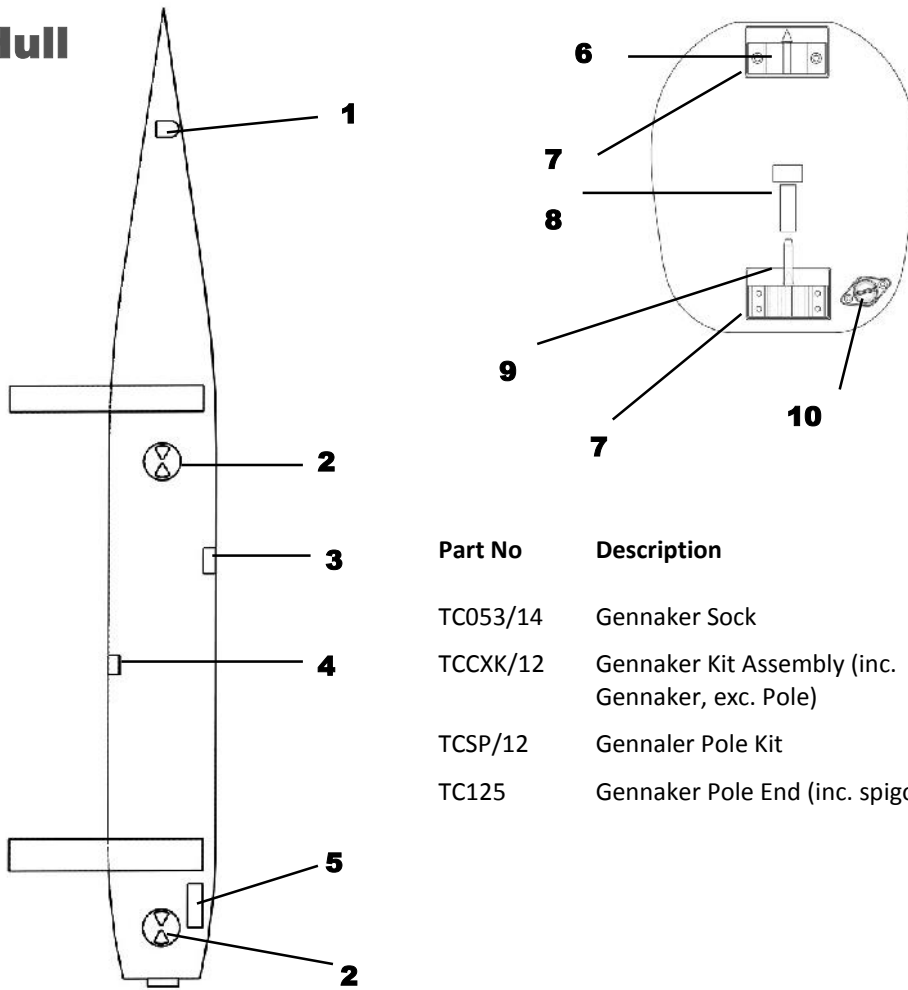
## **Accessories**

<b>Part No</b>	<b>Description</b>
TC170/12	Top Cover
W11	Burgee
B089	Burgee Clip

## **Road Base & Launching**

<b>Part No</b>	<b>Description</b>
TC176/12	Cat Launching Trolley with "V" cups
W3/200	8" Trolley wheel for TC176/12
TC176	Light Weight Aluminium Launching Trolley
W4/5	Trolley Wheel for TC176
TW088	Trailer Straps

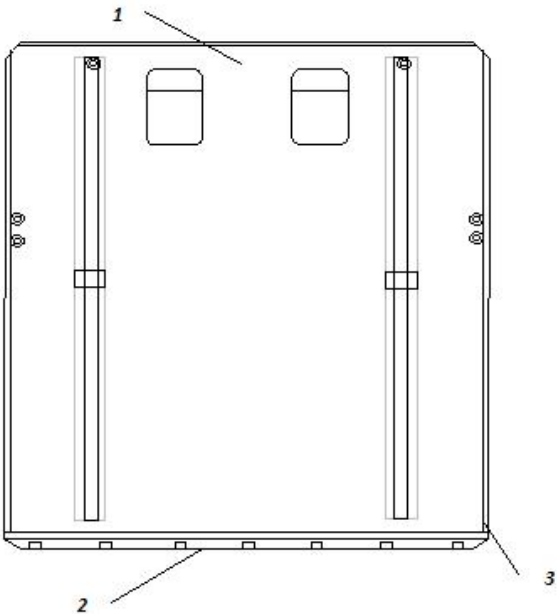
# Hull



Part No	Description
TC053/14	Gennaker Sock
TCCXK/12	Gennaker Kit Assembly (inc. Gennaker, exc. Pole)
TCSP/12	Gennaker Pole Kit
TC125	Gennaker Pole End (inc. spigott)

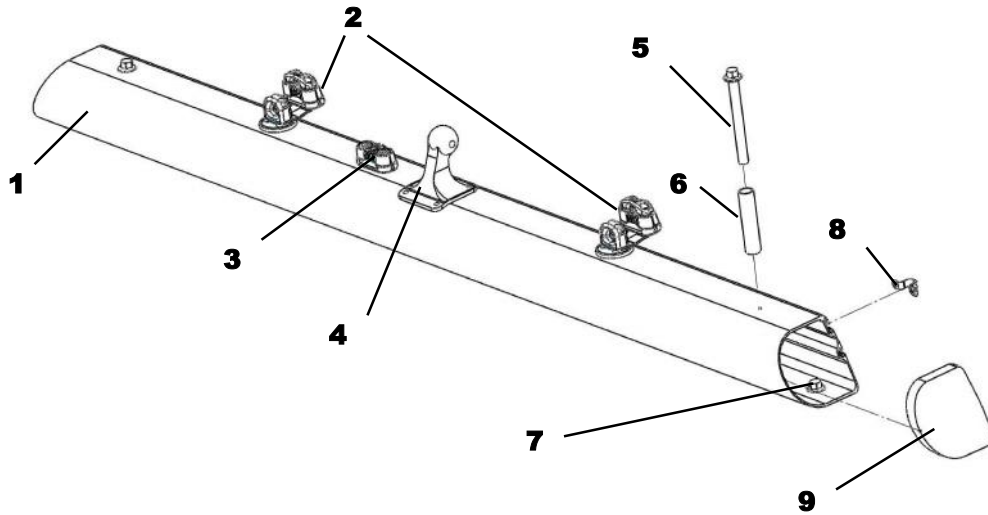
	Description	Part Number
1	Bow Deck Eye	TC122
2	Hatch Cover	P622
3	Shroud Plate	TC244
4	Trampoline Deck Eye	TM006
5	Footstrap/ Handle	P624
6	Gudgeon	TC116
7	Packer	TM035
8	Retaining Clip	C066
9	Pintle	TC193/14
10	Drain Plug	B10/1

# Trampoline



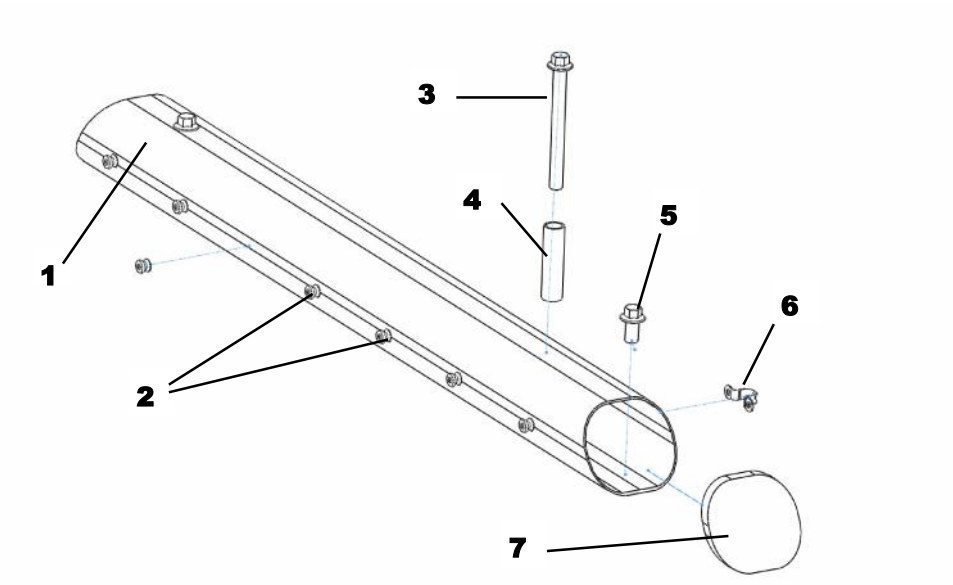
	<b>Description</b>	<b>Part No</b>
1	Trampoline	TC002/12
2	Glass Rod	TC184
3	Side Tension Rope c/w pulley	TC206

# Front Beam



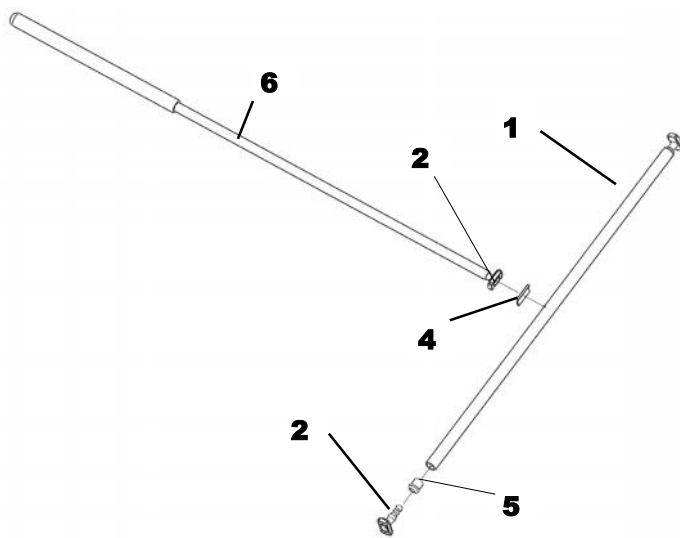
	Description	Part Number
1	Front Cross beam *	TC302/12A
2	Jib Cleat	TC254
3	Gennaker Halyard Cleat	
4	Mast Ball	TC114+SC
5	Long Bolt 130mm (post 2013) Nut Washers	TC128 TC207 TC047 s/s TC065 nylon TC217 nylon
6	Compression Tube	TC162
7	Short Bolt 60mm (post 2013) Nut Washers	TC174 TC207 TC047 s/s TC065 nylon TC217 nylon
8	Deck Eye	C10
9	End Cap - Front Beam	TC203FP
	<b>Up to 2013</b>	
5	Long Bolt 180mm (pre 2013)	TC293
7	Short Bolt 90mm (pre 2013)	TC273
*	Can only be ordered as a pair (front & rear cross beams)	

# Rear Beam



	Description	Part Number
1	Rear Cross Beam *	TC302/12A
2	Trampoline Hooks	TC161/1
3	Large Bolt	TC128
	Nut	TC207
	Washers	TC047
		TC065
		TC217
4	Rear Beam Spacer	TC162
5	Small Bolt	TC273
	Nut	TC207
	Washers	TC047
		TC065
		TC217
6	Deck Eye	C10
7	Rear Beam Cap	TC247
*	Can only be ordered as a pair (front & rear cross beams)	

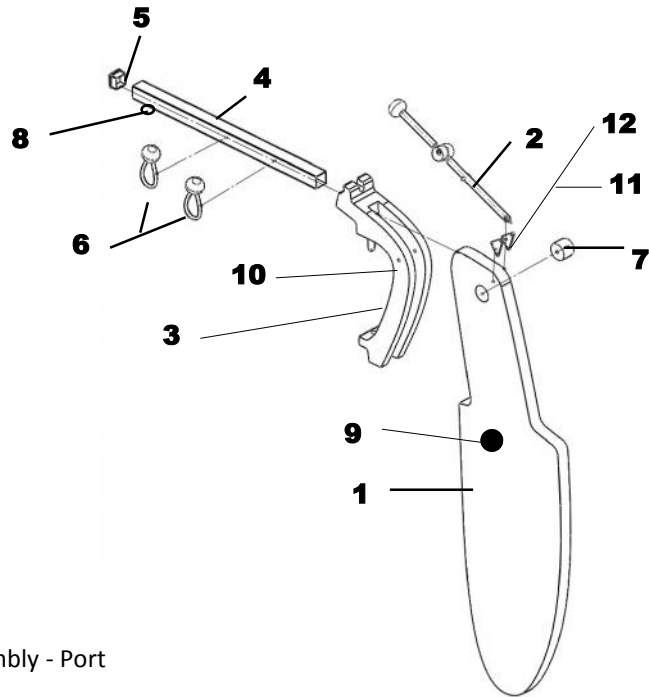
## Rudder Connector & Tiller



	<b>Description</b>	<b>Part No</b>
1	Connector Bar inc fittings	TC305/12K
2	Universal Connecting Joint	TC031
3	Saddle Connector for TC031	TC018
4	Tiller Extension	TC256
5	Moulding (pair)	TC154



# Rudder Assembly

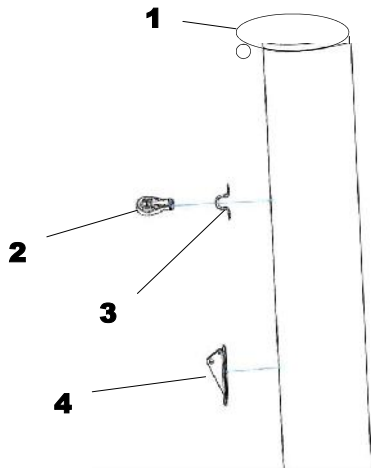


Part No	Description
TC188/12L	Rudder & Tiller Assembly - Port
TC188/12R	Rudder & Tiller Assembly - Starboard
TC291/12L	Rudder Stock & Tiller Assembly - Port
TC291/12R	Rudder Stock & Tiller Assembly - Starboard

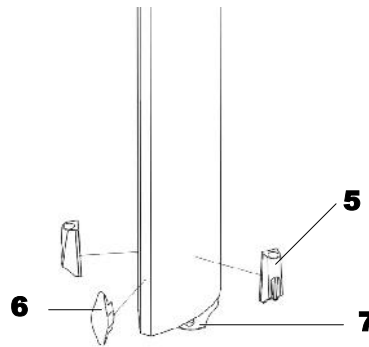
	Description	Part No
1	Rudder Blade	TC115/12
2	Rudder Lever Assembly	TC121
3	Rudder Stock	TC009/12
4	Top Stock	TC130/12
5	Insert	TC126
6	Rudder Retention Strap	TC144 & TC061 (assy)
7	Spacer	TC151
8	Saddle Connector	TC018
9	Black Disk Sticker	TC272
10	Rudder Fixings	H6, H8, H15
11	Link Plates	TC294/14, TC295/14
12	Link Plate Fixings	TC296 x3 Screw TC297 x3 Nut

# Mast pre March 2013

## Top Mast



## Bottom Mast

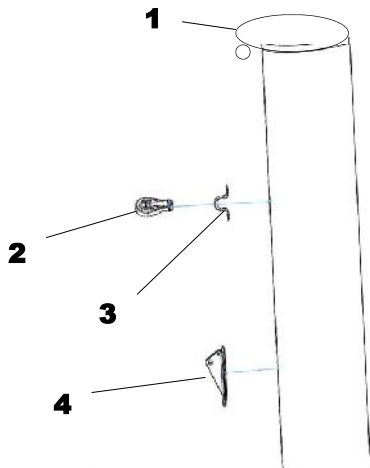


	Description	Part No
1	Masthead inc sheave wheel	TC240
2	Spinnaker Halyard Block	TP103A
3	Deck eye	
4	Hound Fitting	TC241
5	Camcleat—mainhalyard	TC243
6	Horncleat—jib halyard	TC251
7	Mast heel	TC239

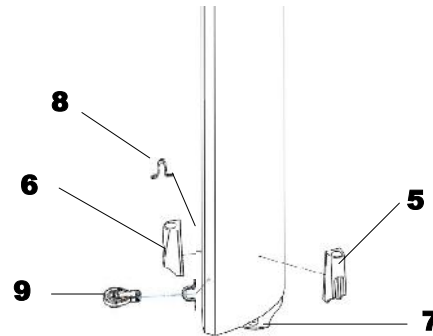
Part No	Description
TC050/12D/WO	12C/12CX Dacron Mainsail
TC052/12D/WO	12C/12CX Dacron Jib
TC051/12/B	12CX Gennaker
ST9	Sail Numbers (set of 10)

# Mast post March 2013

## Top Mast

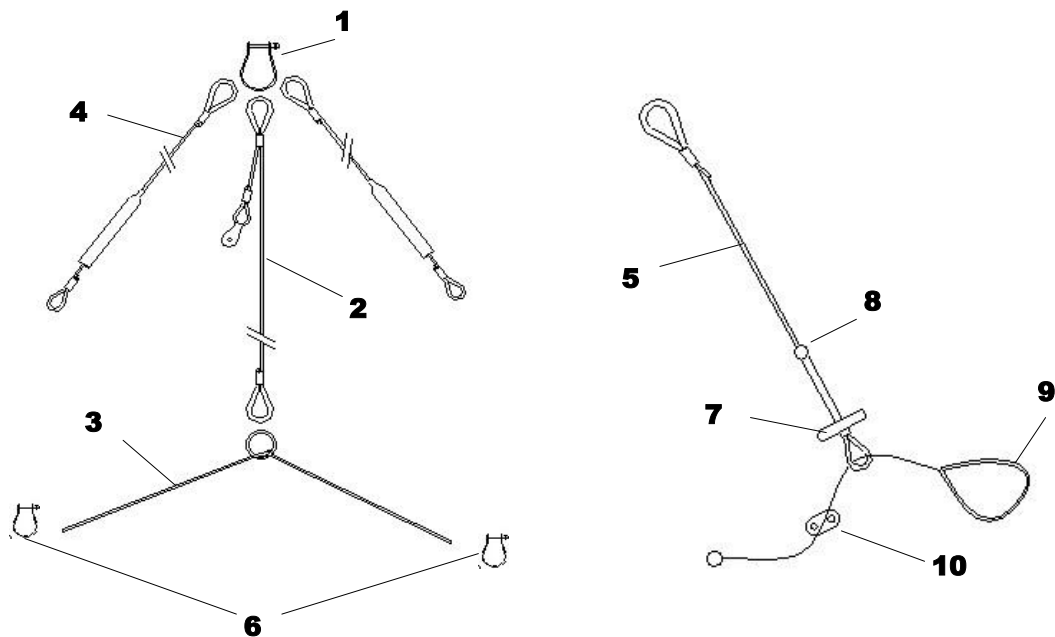


## Bottom Mast



	Description	Part No
	Mast	TC100/12/1
1	Masthead inc sheave wheel	TC240
2	Spinnaker Halyard Block	TP103A
3	Metal P-Clip	TP141
4	Hound Fitting	TC241
5	Camcleat—main halyard	TC243
6	Camcleat—jib halyard	TC250
7	Mast heel	TC239
8	Deck Eye	TM006
9	Main Halyard Block	TP103A

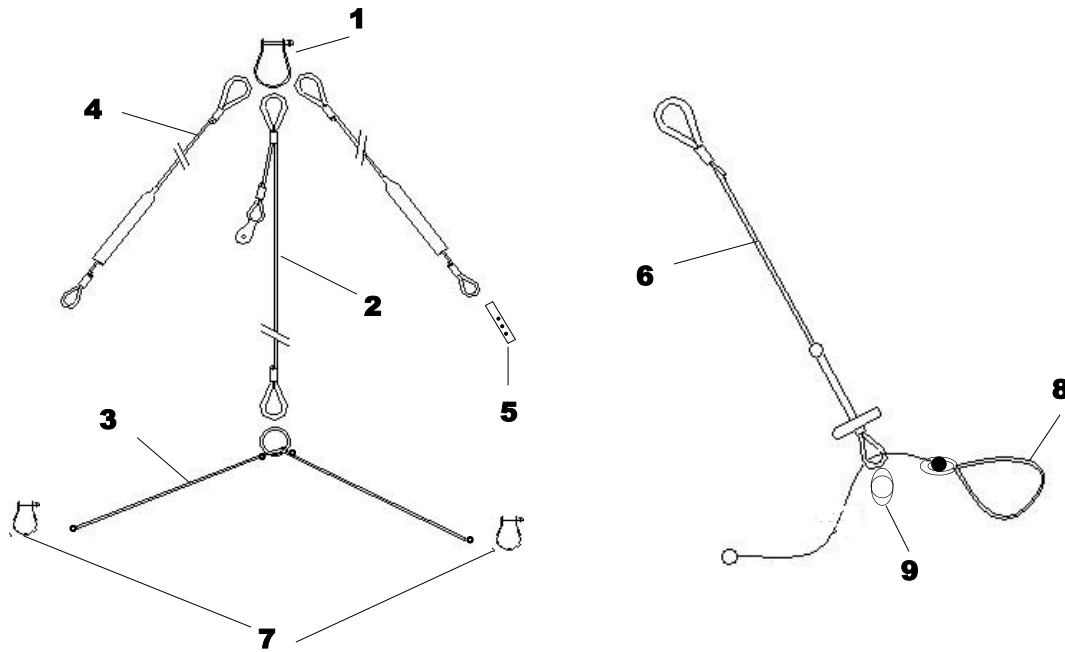
## Wires for boats manufactured up to March 2013



	Description	Part No
1	Bow Shackle	TC196
2	Forestay	TC274/12
3	Bridle Rope	TC276/12
4	Shrouds	TC269/12
5	Trapeze Wire	TC038/12
6	Small Bow Shackle	TC190
7	Trapeze Handle	TC011
8	Rope stopper	K13
9	PVC tubing for trapeze (30cm)	K66
10	Rope Lock	TC001/1

Part No	Description
TC057	Top Furler
TC058	Bottom Furler

## Wires for boats manufactured post March 2013



	Description	Part No
	Wire Rigging Set	TC024
	Trapeze Kit Complete	TC038/12
1	Bow Shackle	TC196
2	Forestay	TC274/12
3	Bridle Wire	TC276/5
4	Shrouds	TC269/12
5	Shroud Adjuster	TC084
6	Trapeze Wire (inc cleat & handle)	TC038/12
7	Small Bow Shackle	TC190
8	Trapeze Hook	TC208
9	Cam Cleat	TC209

Part No	Description
TC100/12	Mast—Unrigged
	Trapeze Kit
	Furler Kit
TC057	Top Furler
TC058	Bottom Furler

## Ropes, Blocks & Rivets

<b>Part No</b>	<b>Description</b>
TC275/12P	Rope Set (excluding blocks)
K30	Mainsheet Rope (8.2 meters)
TC182	Jib Sheet Rope (6 meters)
TC182	Gennaker Sheet Rope ( 11 meters)
TC248	Gennaker Sheet Block
TC136 & TC137	Ratchet Block & Double Block to make Mainsheet Lower Blocks
TC138	Upper Mainsheet Block
TC144	Rope Stopper
D17	Rivets for Mast (each)
TC164	Rivet End Cap (each)